

REJUVENATOR SERIES

The REJUVENATOR SERIES is the initial 'jump start' to your skin, preparing it for the changes ahead! These amazing products encourage healthy desquamation which reestablishes a youthful epidermal thickness.



Peptides can act messengers in cellular communication. They can message the mitochondria (the cell's energy powerhouse) to achieve proper energy production levels which allow for proliferation (mitosis) at an appropriate, healthy and sustainable rate.

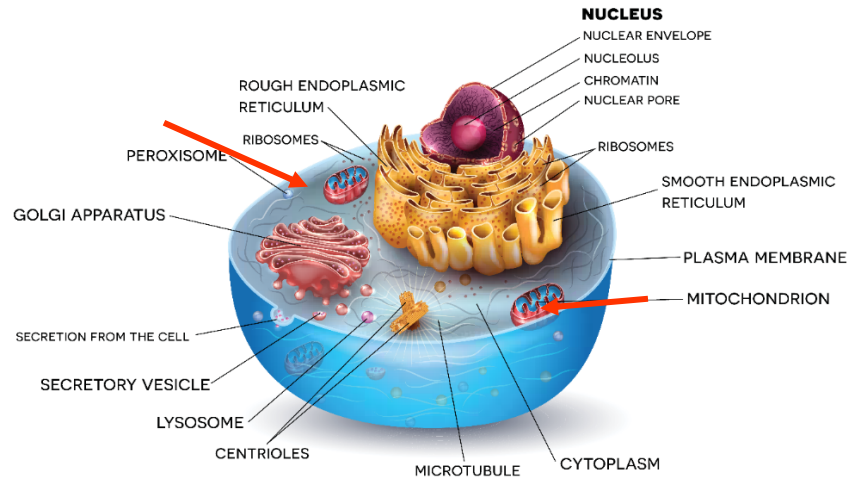


A healthy cell requires an optimized turnover rate, which also aids in corrective natural exfoliation along with increased production of fibroblast cells that create collagen and elastin.

Key ingredients include:

- ✔ **Oligipeptide RNF-1** supports a normalized cell turnover cycle
- ✔ **Allantoin** has soothing and moisturizing effects, and supports the cell renewal process
- ✔ **Niacinamide** (Vitamin B3) and **Tocopheryl Acetate** (Vitamin E) which are necessary for energy production and contribute to a smoother, more toned looking skin.
- ✔ **Pantothenic acid** (a component of CoA), **niacinamide** (a component in NADH), and **pyridoxine** are metabolic components in the formula.

ANATOMY OF THE CELL

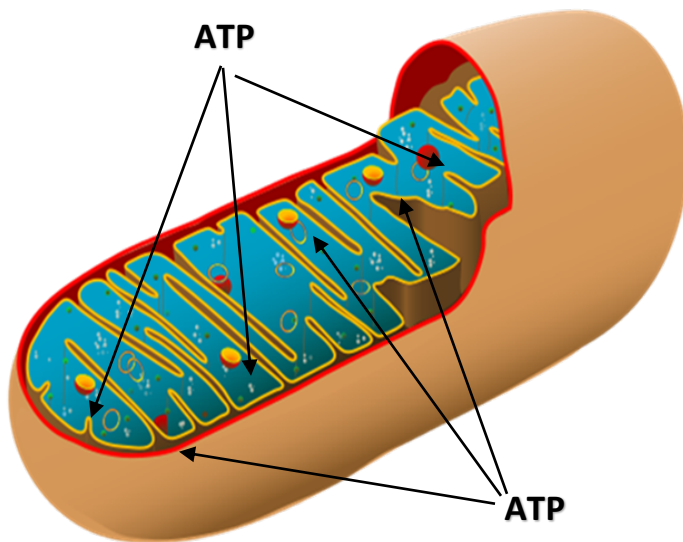


Moderating the thickness of the stratum corneum through the initiation of normal desquamation reduces the appearance of fine lines and wrinkles.

Each cell in the human body needs energy to function. In the state of homeostasis, ATP levels remain constant. However, when the body (or skin) is under stress from inflammation, free radicals, or illness, ATP levels become depleted impacting the functionality of the cell. Peptides can ignite the reproduction of adequate levels of ATP.

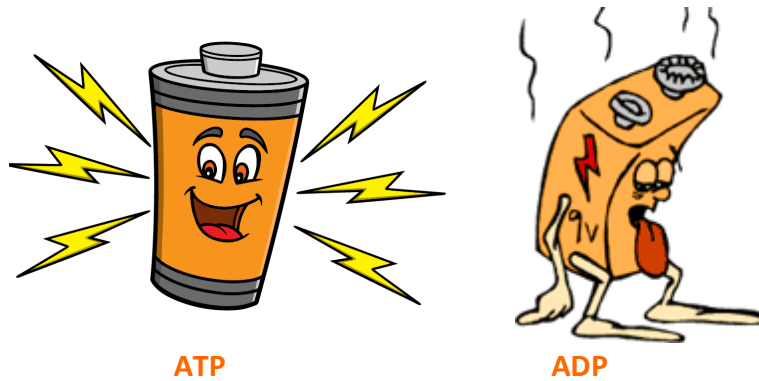
The Mitochondria receives a signal to metabolize energy – ATP (adenosine triphosphate), through a complex process involving the Krebs' Cycle. The end-result of the mitochondria metabolism is the release of new ATP.

MITOCHONDRIA



Each skin cell has up to hundreds of mitochondria. Each mitochondria organelle produces **ATP (adenosine triphosphate)** - the energy to fuel other cellular functions through metabolism. The more ATP produced, the healthier our skin cells will be.

As a cell draws energy, it drains all ATP, converting it to **(adenosine diphosphate) ADP**. Think of ATP as a fully charged battery and ADP as a dead battery.



You can regain a fresh appearance by restoring the cellular turnover cycle to it's youthful level and promoting ATP production to energize cells.

Ingredients: Water, Stearic Acid, Cocos Nucifera (Coconut) Oil, Glyceryl Stearate, PEG-100 Stearate, Butylene Glycol, Glycerin, Cetyl Alcohol, Tocopheryl Acetate, Oligopeptide-RNF-1, Allantoin, Glycol Stearate, Aminomethyl Propanol, Propylene Glycol, Pyridoxine, Diazolidinyl Urea, Niacinamide, Idopropynyl Butylcarbamate, Pantotheinic Acid

Note: See "Cellular Metabolism" for an in-depth explanation of the Krebs's (Citric Acid) Cycle.